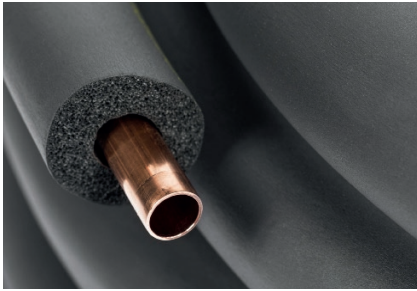


PRE-INSULATED - STANDARD AND MINI-SPLIT ELASTOMERIC BLACK LINESETS

Elastomeric Thermal Black Insulated Linesets

Thermal Insulated With No Seams



Founded in 1942, Cambridge-Lee Industries LLC is the copper-focused manufacturer and distributor for the Plumbing, HVAC, Construction, Industrial, and OEM markets.

We pride ourselves on being the easiest company to work with and the best company to work for. Our employees are customer-driven, providing extraordinary service, working with you to solve your problems, and offering new value-add products, services and customized options.

**Made in USA**

**For more information**

Phone 610.926.4141  
Toll-free 800.926.5588  
Fax 800.255.7317  
Email [CLsales@camlee.com](mailto:CLsales@camlee.com)  
86 Tube Dr.  
Reading, PA 19605

[www.camlee.com](http://www.camlee.com)



Cambridge-Lee Industries LLC

We are proud to offer over 740 different standard combinations of lengths, thicknesses, liquid lines, suction lines, and insulations on our linesets.

- Linesets and Mini-Splits are produced in accordance with ASTM B280 & ASTM B1003
- Flame Spread Index is rated at 25/50 Plenum rated to ASTM E84, UL723, NFPA 255
- Thermally effective from -40 degrees Fahrenheit to 200 degrees Fahrenheit
- Tough, Flexible Weather Resistant outer layer (ASTM G90) makes installation quick, efficient, and economical

**Available Sizes**

Copper Sizes (OD)	Insulation Sizes	Lengths Available
1/4	3/8	10
5/16	1/2	15
3/8	3/4	20
1/2	1	25
5/8		30
3/4		35
3/8		40
1 1/8		45
		50

**Additional Features:**

- Water vapor permeability per ASTM E96
- Standard linesets available with plain end or 90 degree bends
- Mini-split linesets available with plain ends or double flared ends
- Submittals available upon request

*We have a solution for every freight challenge*



**Product Specifications**

Linesets are copper tubing lines used to connect split systems air conditioners and heat pumps. Installation is quick, efficient and economical. Factory assembly of Linesets assures Quality & Consistency.

